



July 2024

WORK CONTINUES TO BRING ELECTRICITY TO THE NAVAJO NATION

For the second year in a row, two linemen from Central Wisconsin Electric Cooperative (CWEC) traveled to the Navajo Nation in Arizona to take part in the Light Up Navajo Project. Linemen Mack Yarbrough and Josh Wick spent a week working to bring electricity to residents of the Navajo Nation.

Wick said he decided to participate in the Light Up Navajo Nation Project because he thought it would be a cool experience.

"Everyone around here has power who wants it," Wick said. "It was weird to hear that people in America, who want power, still don't have power."

Yarbrough said it was a good opportunity to use his skills to help people.

During the week, Yarbrough and Wick worked with a lineman from Massachusetts and six linemen from two different electric utilities in Utah, as well as linemen from the Navajo Tribal Utility Authority.



[READ THE REST OF THE ARTICLE](#)

STEAM GRANTS AWARDED

TO AREA SCHOOL DISTRICTS

Two school districts in the Central Wisconsin Electric Cooperative (CWECC) service area have received STEAM grants to be used for projects and initiatives related to science, technology, engineering, art, and math.

The STEAM grants were introduced by CWECC in the second half of 2022 because the co-op values education and training and understands that classrooms may have limited funding to pursue the projects needed to educate students in local communities.



School districts who received the grants are as follows.

[READ THE REST OF THE ARTICLE](#)

DID YOU GET A CALL FROM CWECC?

With the discontinuance of the load management program for water heaters, we are in the process of contacting members of Central Wisconsin Electric Cooperative who were part of the program. The purpose of the contact is to schedule an appointment to remove the load management receivers from their water heaters. If you receive a message from CWECC regarding the removal of a load management receiver, please return the message so we can get your appointment scheduled. Only members who have load management receivers will be contacted. If you have any questions, please call 715-677-2213.



WATCH THE CLOCK TO LOCK IN ENERGY SAVINGS

As temperatures rise and summer activities heat up, a reliable flow of electricity is essential to ensure Central Wisconsin Electric Cooperative (CWECC) members stay cool and connected. July and August

bring some of the most extreme summer temps, which means people will be spending more time indoors to avoid the heat, and air conditioners will be working overtime. This increased use of electricity will cause spikes in demand, also known as energy peaks. During peak times, CWEC must work closely with our wholesale power provider to ensure a balanced supply of electricity is always available to meet our community's energy needs.

TIPS TO BEAT THE SUMMER PEAK

When we all work together to lower energy use during peak hours, we can lock in lower electricity rates, so everyone saves. Here are a few simple ways to save during peak summer hours.

- 1 Raise the thermostat a few degrees.
- 2 Use ceiling fans (in occupied rooms) to feel cooler.
- 3 Avoid using major appliances.
- 4 Close drapes and blinds to block heat from the sun.
- 5 Turn off and unplug non-essential electronics and lights.



The electric grid is essentially a giant network that connects power plants, utility poles and power lines to homes and businesses across the country, throughout our state and to our local communities. All parts of the network must work together to ensure the flow of electricity stays balanced 24/7.

[READ THE REST OF THE ARTICLE](#)



HAPPY
4th of July

**CWEC will be closed on
Thursday, July 4,
in recognition of the
Independence Day holiday.**

**From everyone at CWEC,
we wish you a safe and
enjoyable Fourth of July
holiday.**

GET YOUR PHOTOS ENTERED IN THE

2024 MEMBER PHOTO CONTEST

Central Wisconsin Electric Cooperative is holding its annual "Life in Rural Wisconsin" photo contest for members' photos to be featured in the 2025 calendar. Winning photos may be used in future newsletters or cooperative publications.

- Photos must be taken within the Central Wisconsin Electric Cooperative service area.
- Photos should capture life in rural Wisconsin (seasons, wildlife, landscape, people, etc.)
- Photos must have a horizontal (landscape) orientation.
- Photos can be in color or black and white.
- Contest will run until August 26, 2024; however, submitted photos can be taken during anytime of the year.



Photo Contest Entry Options:

Email: Bert Lehman at **bert.lehman@cwecoop.com**

Mail: PO Box 100, Rosholt, WI 54473. (Photo(s) must be 8"x10" in size)

Online: **www.cwecoop.com/member-photo-contest**

Drop Off: Central Wisconsin Electric Cooperative Office – 10401 Lystul Road, Rosholt. (Photo(s) must be 8"x10" in size if dropped off at our office.)

For a complete set of rules as well as entry forms and photo release forms, visit our website at: www.cwecoop.com

[ENTRY FORMS AVAILABLE HERE](#)

10 THINGS YOU MIGHT NOT KNOW ABOUT POWER RESTORATION

Have you ever watched a video or TV show where a person is cooking a meal, then suddenly, they snap their fingers, and the meal is plated and ready to eat? That's called a jump cut.

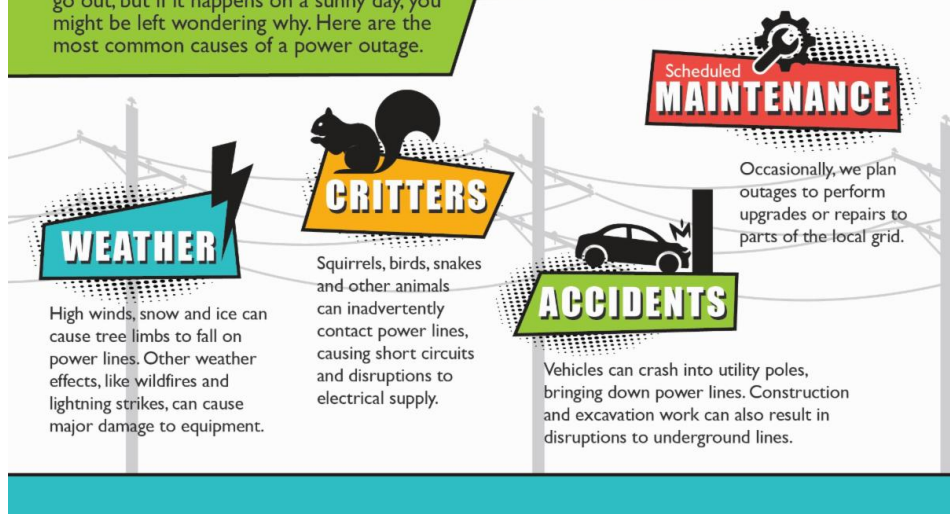
While we wish we could "jump cut" from a power outage to power restoration, it can often take a lot more effort and people to make it

happen. We often receive questions from members about power outages and why it can take time to get the lights back on. Given our reliance on electricity, there's simply never a good time to be without it.

We'd like to take some time to shed light on our restoration process to help our members understand what may be happening behind the scenes. Here are 10 things you might not know about restoration:

COMMON CAUSES OF POWER OUTAGES

There is never a good time for the power to go out, but if it happens on a sunny day, you might be left wondering why. Here are the most common causes of a power outage.



[READ THE REST OF THE ARTICLE](#)

[Bill Payment Options](#)

[Energy Conservation Rewards](#)

[Small Business Loans](#)

[Operation Round Up Information](#)

[Thinking about adding solar energy?](#)

[Community Events Calendar](#)



Central Wisconsin Electric Cooperative
10401 Lystul Road
Rosholt, WI 54473
715-677-2211

[Contact Us](#)

Central Wisconsin Electric Cooperative | 10401 Lystul Road | Rosholt, WI 54473 US

[Unsubscribe](#) | [Update Profile](#) | [Constant Contact Data Notice](#)



Try email marketing for free today!